

Place  
Stamp  
Here

Hello,

Oxy Petroleum Corporation  
P.O. Box 173779  
Denver, CO 80217

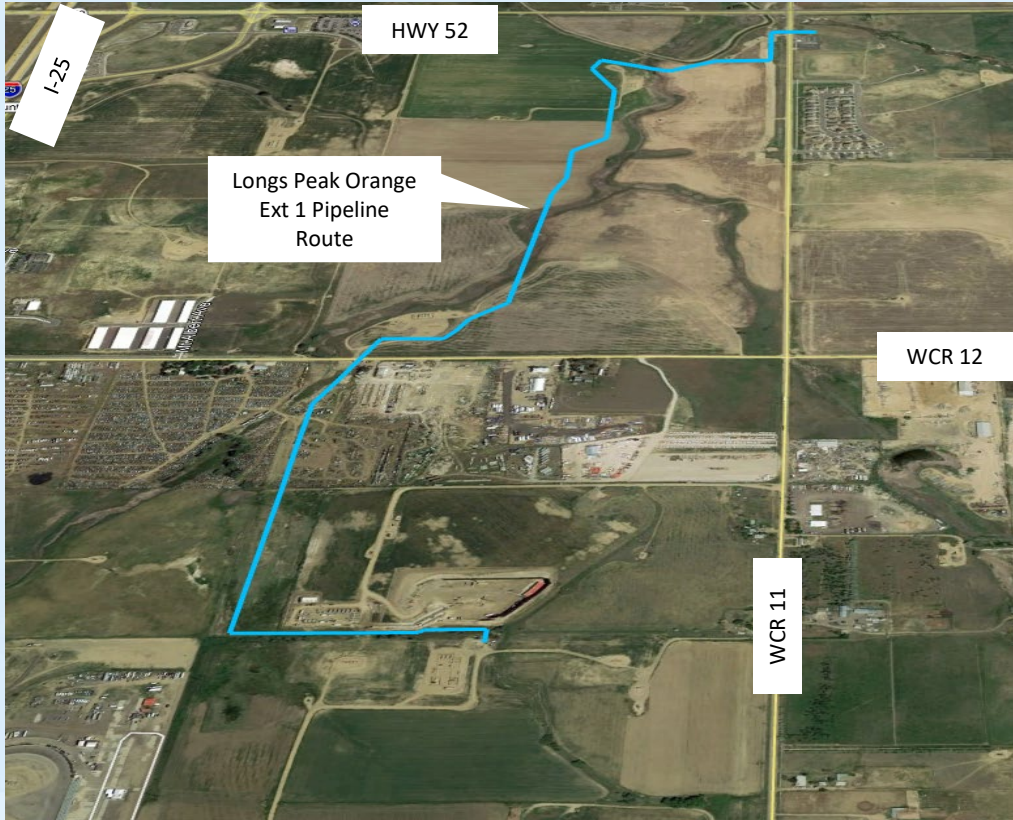
We are writing to inform you that Oxy will be constructing pipeline in and around your community from mid-August to mid-December. Please see the map on the reverse side for reference. During this work, please expect to see equipment such as water trucks, hydro vac trucks, excavators, and backhoes as part of these operations. We will be applying dust suppression on an as-needed basis, and crews will operate during daylight hours only.

If you have any questions or wish to report an issue related to our operations, please do not hesitate to contact us via the Oxy Colorado Response Line at **866.248.9577** or **ColoradoStakeholder@oxy.com**. When you contact us, please reference this activity by the following name: **Longs Peak Orange Ext 1 Pipeline Construction**.

### Examples of Equipment Utilized



## Longs Peak Orange Ext 1 Pipeline Route



A Wholly Owned Subsidiary of Anadarko

Oxy Colorado Response Line

866.248.9577

ColoradoStakeholder@oxy.com

For more information about oil & natural gas  
development visit: <http://cogcc.state.co.us>



Know what's below.  
Call before you dig.