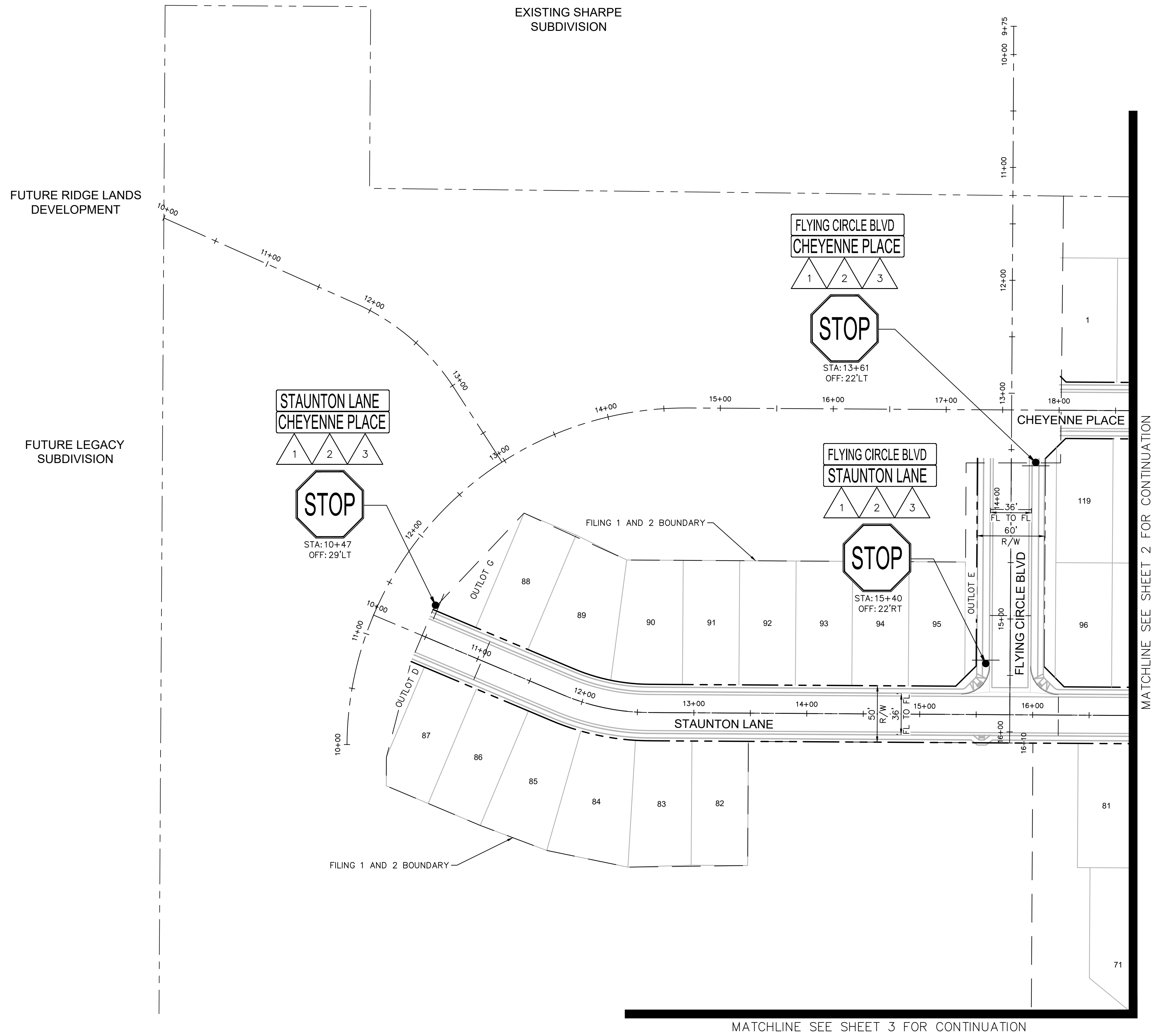
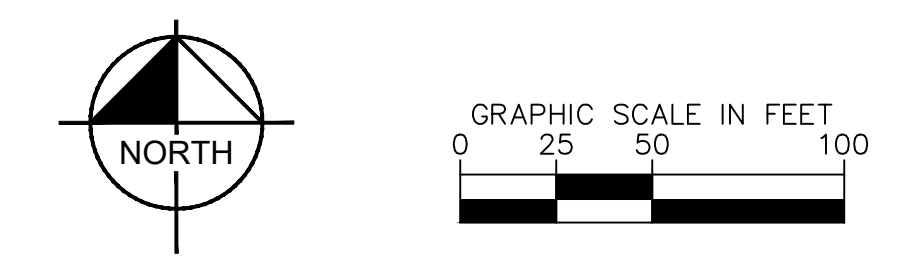
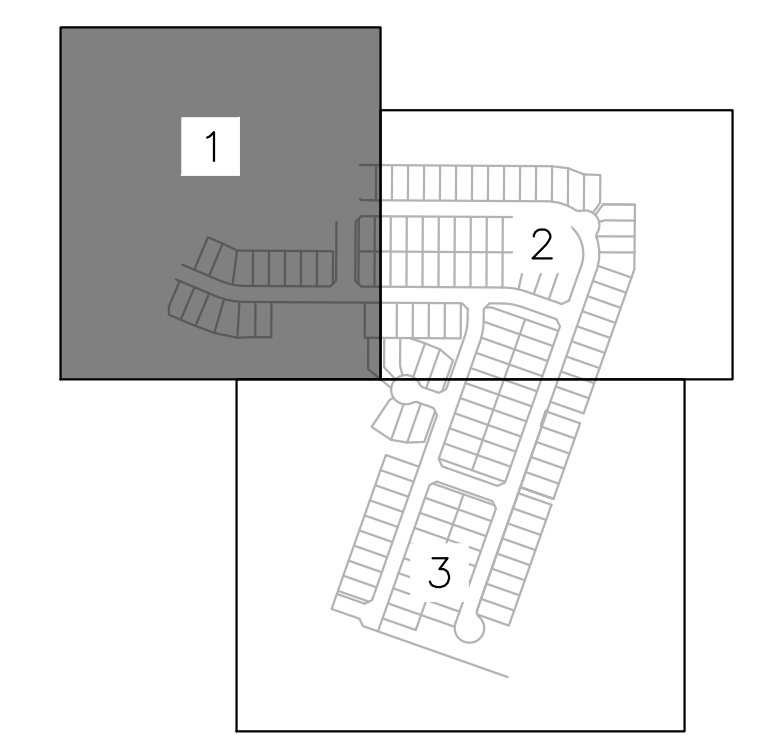


K:\\_VEN\_Civil\196011011 - Mesa Ridge\CAAD\PlanSheets\Phase 1\SM01-196011011.dwg, Jan 17, 2022 Steven Powers  
XREFS: K:\\_VEN\_Civil\196011011 - Mesa Ridge\CAAD\PlanSheets\Phase 1\SM01-196011011.dwg, K:\\_VEN\_Civil\196011011 - Mesa Ridge\CAAD\PlanSheets\Phase 1\SM01-196011011.dwg  
THIS DRAWING IS THE PROPERTY OF KIMLEY-HORN AND ASSOCIATES, INC. NO PART OF THIS DRAWING IS TO BE REPRODUCED OR TRANSMITTED IN ANY FORM OR BY ANY MEANS, ELECTRONIC OR MECHANICAL, INCLUDING PHOTOCOPYING, RECORDING, OR BY ANY INFORMATION STORAGE AND RETRIEVAL SYSTEM, WITHOUT THE WRITTEN AUTHORIZATION AND ADAPTATION BY KIMLEY-HORN AND ASSOCIATES, INC. SHALL BE WITHOUT LIABILITY TO KIMLEY-HORN AND ASSOCIATES, INC.



- SIGNING NOTES**
- 1 INSTALL SIGN POST & FOUNDATION
  - 2 INSTALL R1-1 (30"x30") STOP SIGN PER MUTCD STANDARD DETAIL
  - 3 INSTALL STREET NAMES SIGN PER CITY OF DACONO STANDARD SPECIFICATIONS AND DETAIL R-24. CONTRACTOR TO PROVIDE SHOP DRAWING TO CITY ENGINEER FOR REVIEW PRIOR TO FABRICATION.



MESA RIDGE - FILING 2  
**SIGNING AND MARKING PLAN**

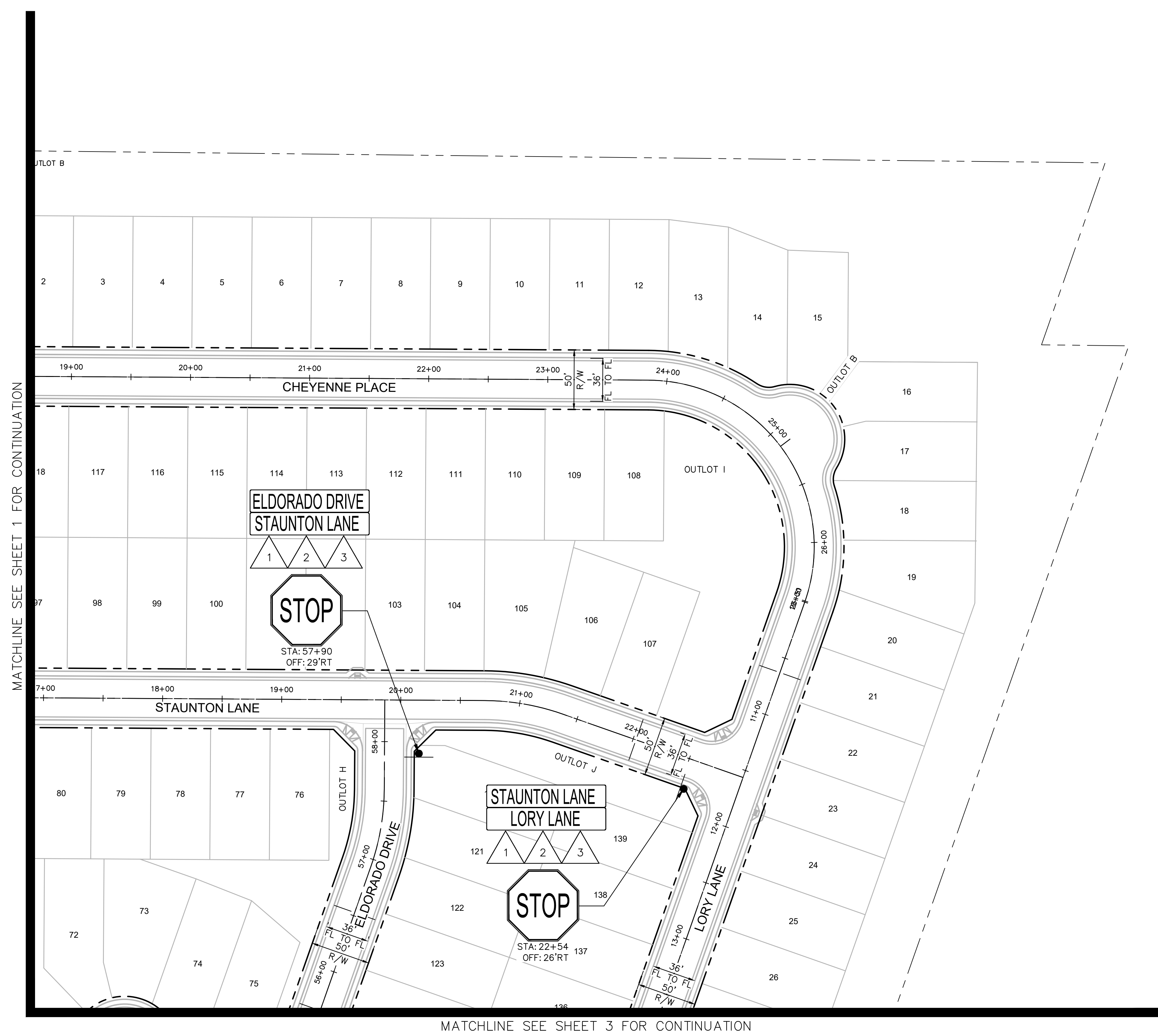
DACONO, CO



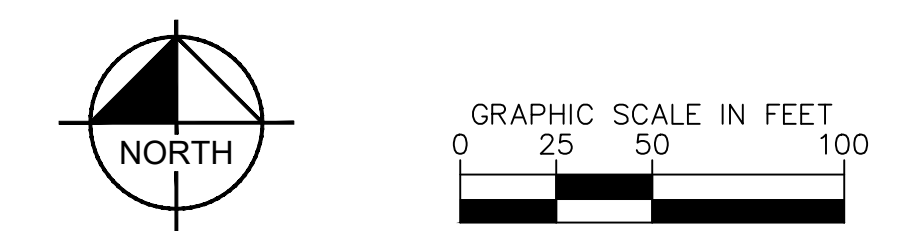
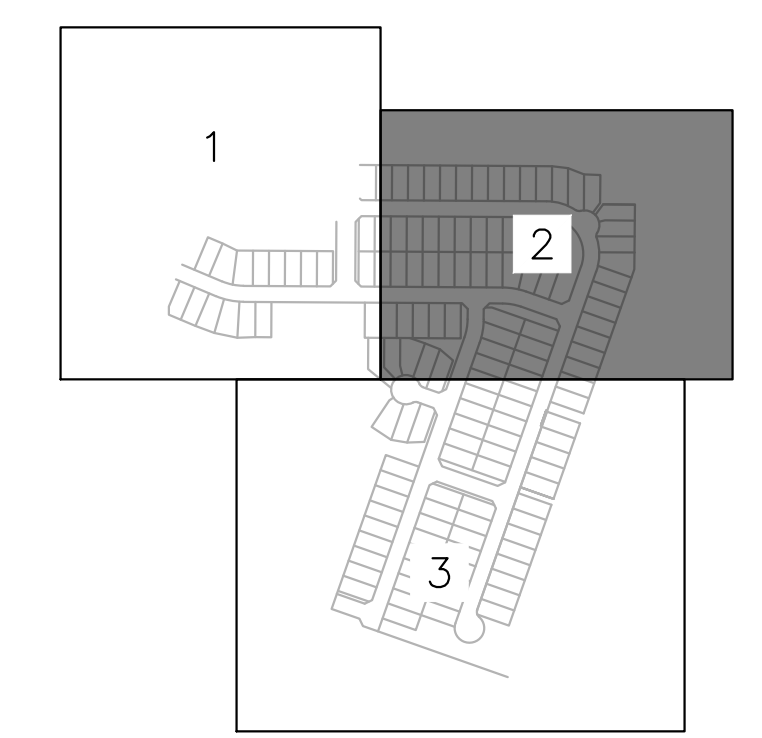
DESIGNED	DRAWN	CHECKED
KH TEAM	KH TEAM	TLC
SCALE (H): 1" = 50'		
SCALE (V): N/A		
DATE:	SHEET NO.	
01/17/2022	1	
PROJECT NO.	196011011	
DWG. NAME	SM01-196011011.dwg	
of 50 sheets		

CASE NO.: TBD

K:\\_VEN\_Civil\196011011 - Mesa Ridge\CADD\PlanSheets\Phase 1\SM01-196011011.dwg, Jan 17, 2022 Steven Powers  
 XREFS: K:\\_VEN\_Civil\196011011 - Mesa Ridge\CADD\PlanSheets\Phase 1\SM01-196011011.dwg, K:\\_VEN\_Civil\196011011 - Mesa Ridge\CADD\PlanSheets\Phase 1\SM01-196011011.dwg, K:\\_VEN\_Civil\196011011 - Mesa Ridge\CADD\PlanSheets\Phase 1\SM01-196011011.dwg  
 THIS DOCUMENT IS THE PROPERTY OF KIMLEY-HORN AND ASSOCIATES, INC. NO PART OF THIS DOCUMENT IS TO BE REPRODUCED OR TRANSMITTED IN ANY FORM OR BY ANY MEANS, ELECTRONIC OR MECHANICAL, WITHOUT WRITTEN AUTHORIZATION FROM KIMLEY-HORN AND ASSOCIATES, INC.



- ### SIGNING NOTES
- 1 INSTALL SIGN POST & FOUNDATION
  - 2 INSTALL R1-1 (30"x30") STOP SIGN PER MUTCD STANDARD DETAIL
  - 3 INSTALL STREET NAMES SIGN PER CITY OF DACONO STANDARD SPECIFICATIONS AND DETAIL R-24. CONTRACTOR TO PROVIDE SHOP DRAWING TO CITY ENGINEER FOR REVIEW PRIOR TO FABRICATION.



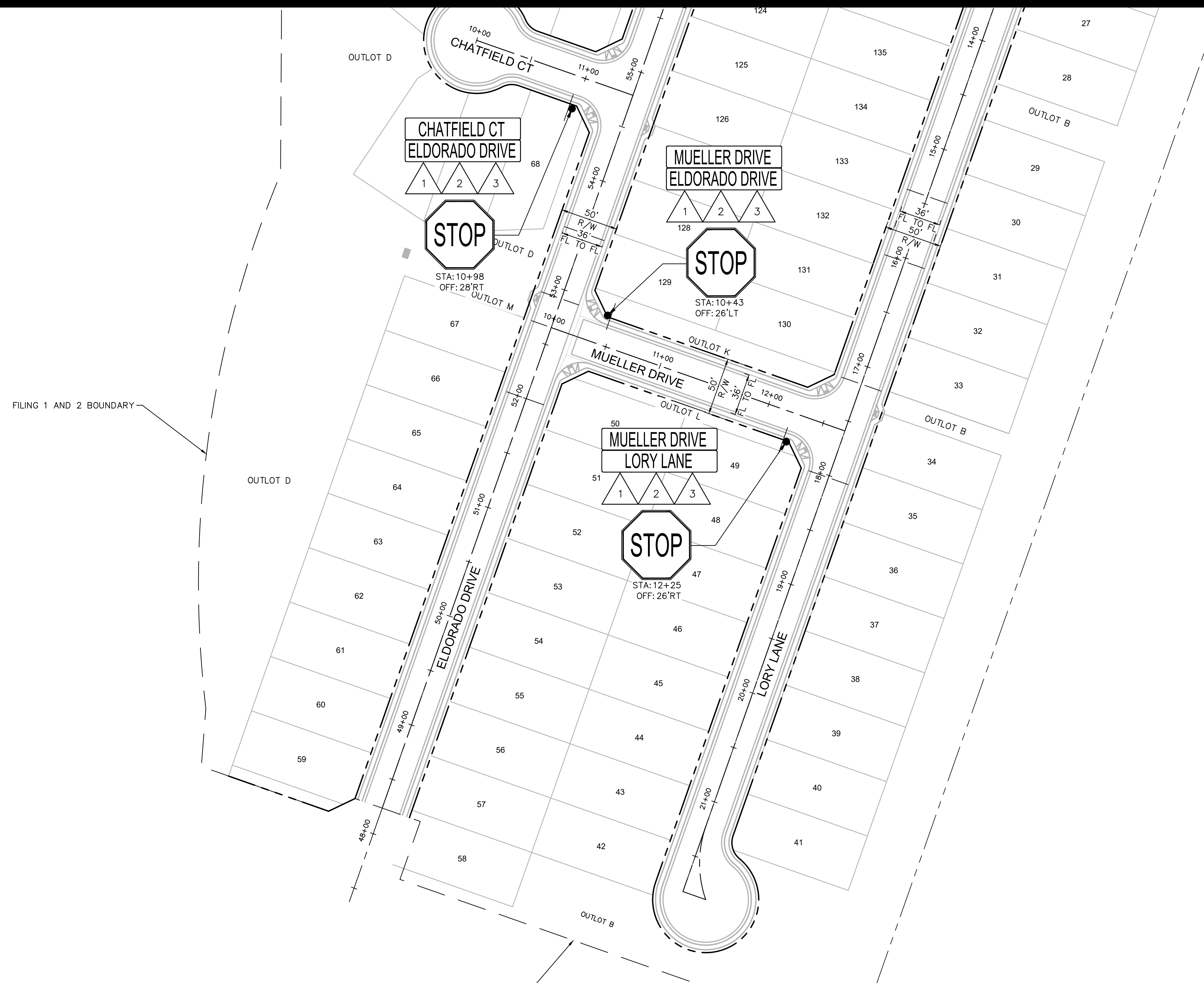
Mesa Ridge 811 Know what's below. Call before you dig.

MESA RIDGE - FILING 2  
**SIGNING AND MARKING PLAN**  
 DACONO, CO

**Kimley»Horn**  
 © 2022 KIMLEY-HORN AND ASSOCIATES, INC.  
 4582 SOUTH ULSTER STREET, SUITE 1500  
 DENVER, CO 80237 (303) 228-2300

DESIGNED KH TEAM	DRAWN KH TEAM	CHECKED TLC
SCALE (H): 1" = 50'		SHEET NO. <b>2</b> of 50 sheets
SCALE (V): N/A		
DATE: 01/17/2022		
PROJECT NO. 196011011		
DWG. NAME SM01-196011011.dwg		

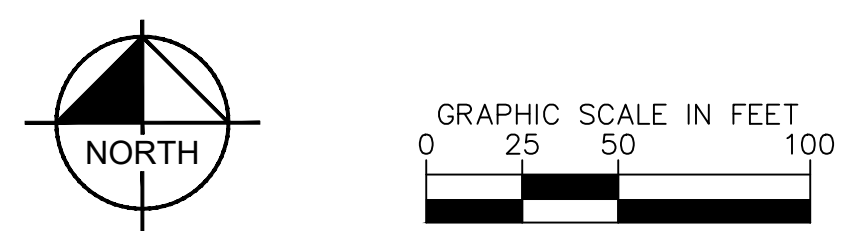
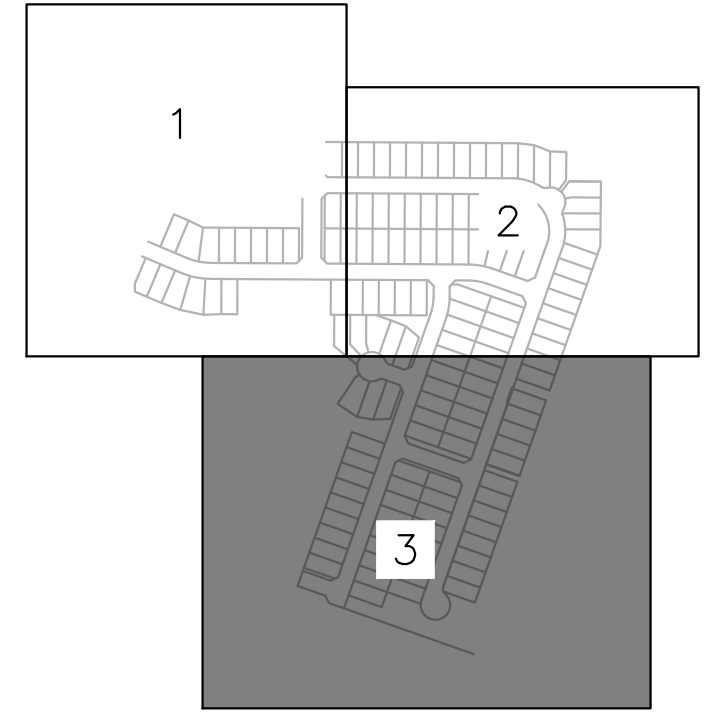
CASE NO.: TBD



FILING 1 AND 2 BOUNDARY

FILING 1 AND 2 BOUNDARY

- ### SIGNING NOTES
- 1 INSTALL SIGN POST & FOUNDATION
  - 2 INSTALL R1-1 (30"x30") STOP SIGN PER MUTCD STANDARD DETAIL
  - 3 INSTALL STREET NAMES SIGN PER CITY OF DACONO STANDARD SPECIFICATIONS AND DETAIL R-24. CONTRACTOR TO PROVIDE SHOP DRAWING TO CITY ENGINEER FOR REVIEW PRIOR TO FABRICATION.



Mesa Ridge

811 Know what's below.  
Call before you dig.

MESA RIDGE - FILING 2  
**SIGNING AND MARKING PLAN**

DACONO, CO

**Kimley»Horn**

© 2022 KIMLEY-HORN AND ASSOCIATES, INC.  
4582 SOUTH ULSTER STREET, SUITE 1500  
DENVER, CO 80237 (303) 228-2300

DESIGNED KH TEAM	DRAWN KH TEAM	CHECKED TLC
SCALE (H): 1" = 50'		SHEET NO. <b>3</b>
SCALE (V): N/A		
DATE: 01/17/2022		
PROJECT NO. 196011011		
DWG. NAME SM01-196011011.dwg		of 50 sheets

K:\\_VEN\_Civil\196011011 - Mesa Ridge\CADD\PlanSheets\Phase 1\SM01-196011011.dwg, Jan 17, 2022 Steven Powers  
 XREFS: K:\\_VEN\_Civil\196011011 - Mesa Ridge\CADD\PlanSheets\Phase 1\SM01-196011011.dwg, K:\\_VEN\_Civil\196011011 - Mesa Ridge\CADD\PlanSheets\Phase 1\SM01-196011011.dwg  
 THIS DOCUMENT IS THE PROPERTY OF KIMLEY-HORN AND ASSOCIATES, INC. NO PART OF THIS DOCUMENT IS TO BE REPRODUCED OR TRANSMITTED IN ANY FORM OR BY ANY MEANS, ELECTRONIC OR MECHANICAL, INCLUDING PHOTOCOPYING, RECORDING, OR BY ANY INFORMATION STORAGE AND RETRIEVAL SYSTEM, WITHOUT THE WRITTEN AUTHORIZATION OF KIMLEY-HORN AND ASSOCIATES, INC.

CASE NO.: TBD